

**VERONAFIERE**

# VINITALY

DAL: 06 /04/2014

AL: 09/04/2014

ESPOSITORE  
EXHIBITOR: **REG SARDEGNA**

PADIGLIONE: **Padiglione 8 (EX 7B)**  
HALL:

STAND: A3 - A5 - A6 - A7 - B2 - B3- B4 - B5 - B6 - B7  
STAND: C2 - C3 - C4 - C5 - C6 - C7

DATA: 19/06/2013 11:16

## LEGENDA

PADIGLIONE n° 7B SUP. INTERNA LORDA 11600 MQ



## USCITA DI SICUREZZA



COLONNA C.A. (Ø800 mm)



CANALINA TECNICA (LARGH. 800 mm)



BOTOLA SERVIZI TECNICI - 220 mm (IDRIC-ELETT-TEL)



---

NASPI - IDRANTI



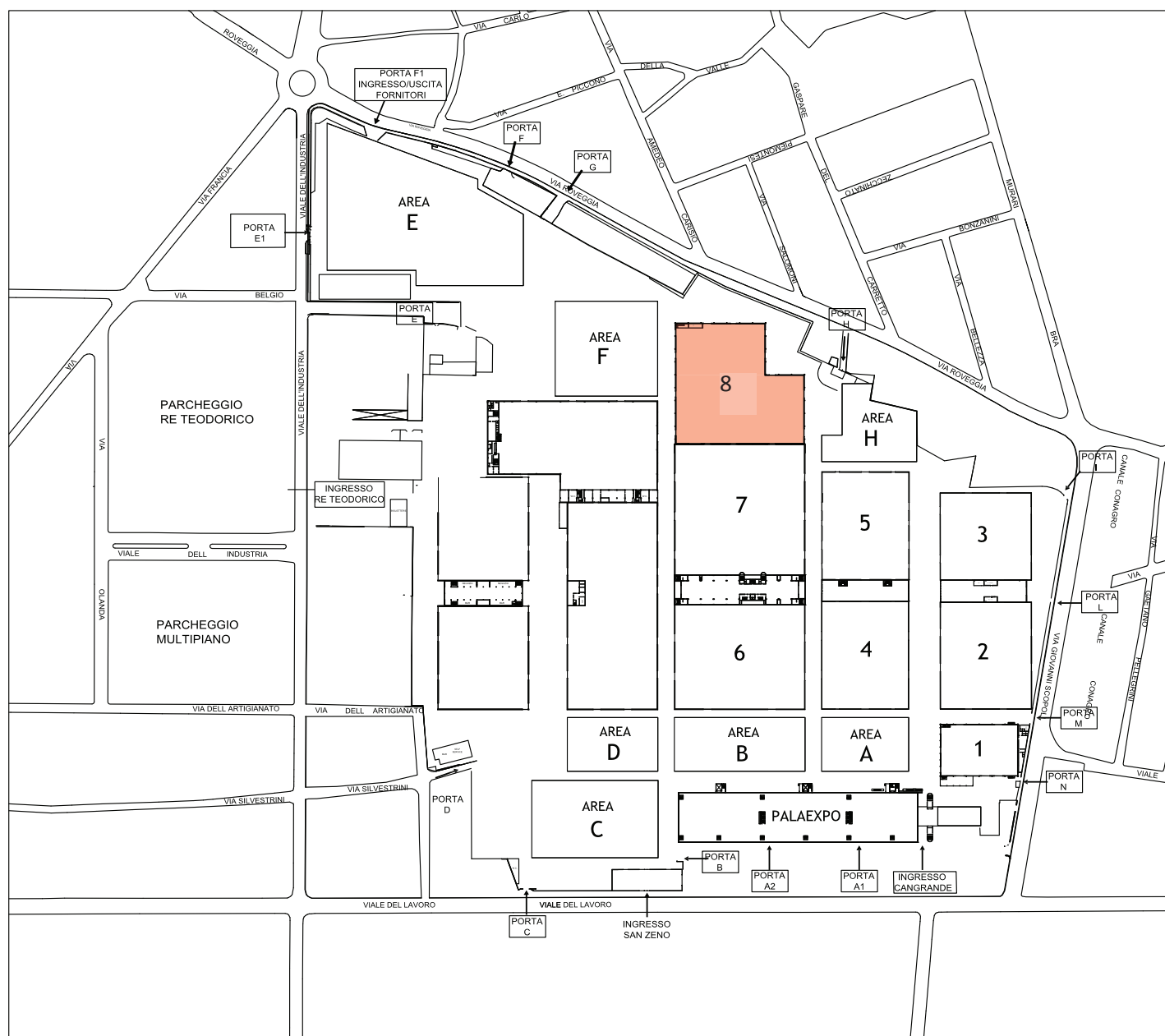
ESTINTORE



CASSETTE TECNICHE PRESA DA 16A E PRESA DA 32A

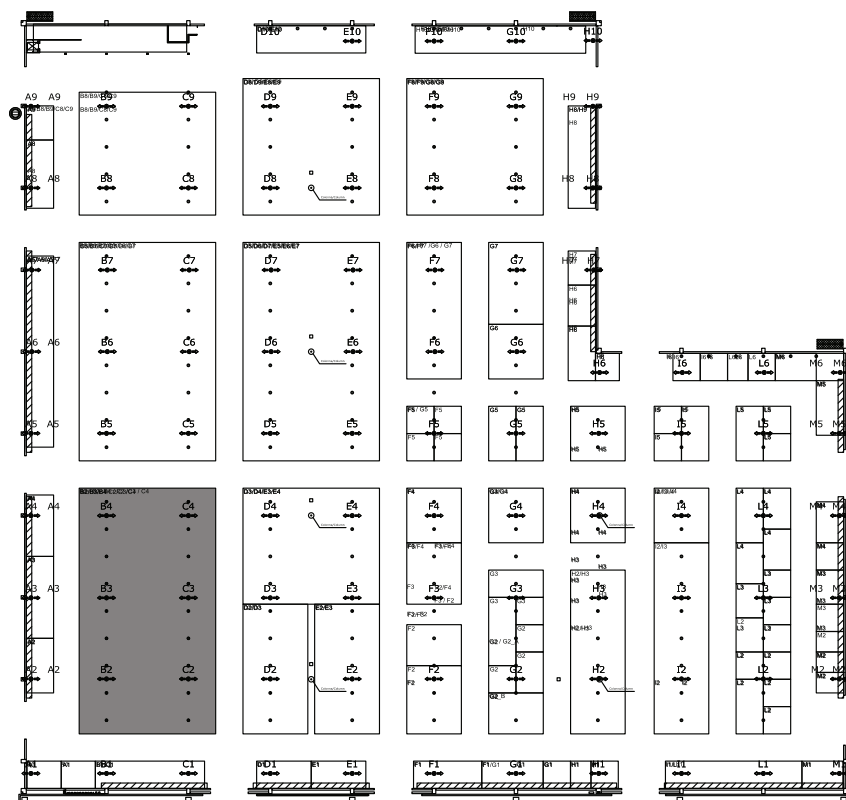
N.B. SOVRACCARICO MAX PAV. 2000 Kg/mq

UBICAZIONE DEL PADIGLIONE NEL QUARTIERE FIERISTICO  
HALL LOCATION IN THE FAIRGROUND



UBICAZIONE DELLO STAND ALL'INTERNO DEL PADIGLIONE  
STAND LOCATION WITHIN THE HALL

DATA: 19/06/2013 11:16  
DATE:



VINITALY

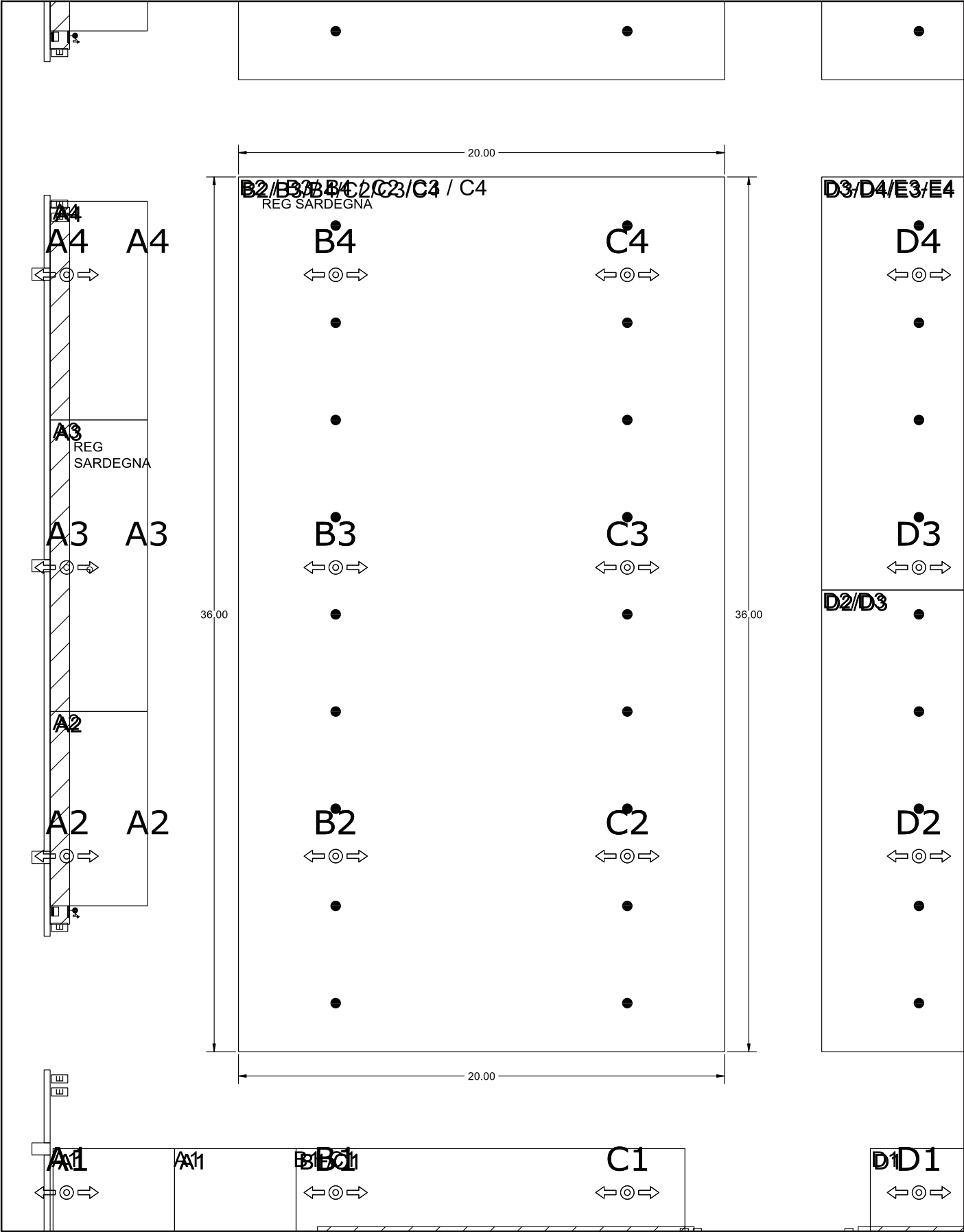
REG SARDEGNA

Padiglione 8 (EX 7B) B2-3-4 - C2-3-4

PIANTA  
PLAN

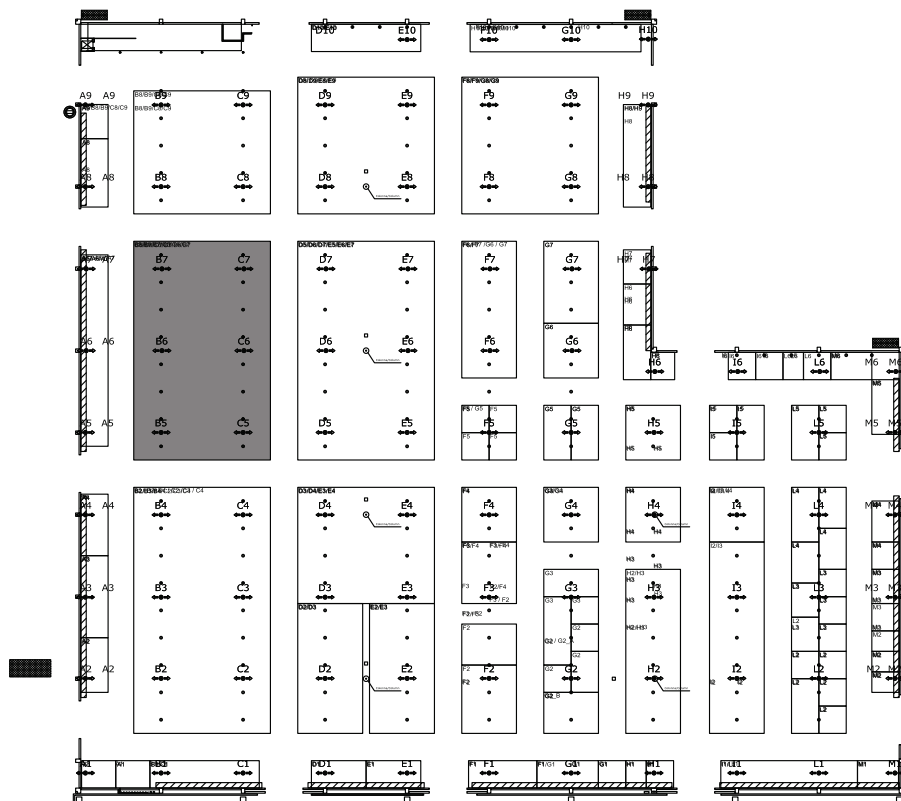
SCALA:  
SCALE: 1:200

DATA:  
DATE: 19/06/2013 11:16



UBICAZIONE DELLO STAND ALL'INTERNO DEL PADIGLIONE  
STAND LOCATION WITHIN THE HALL

DATA: 19/06/2013 12:16



VINITALY

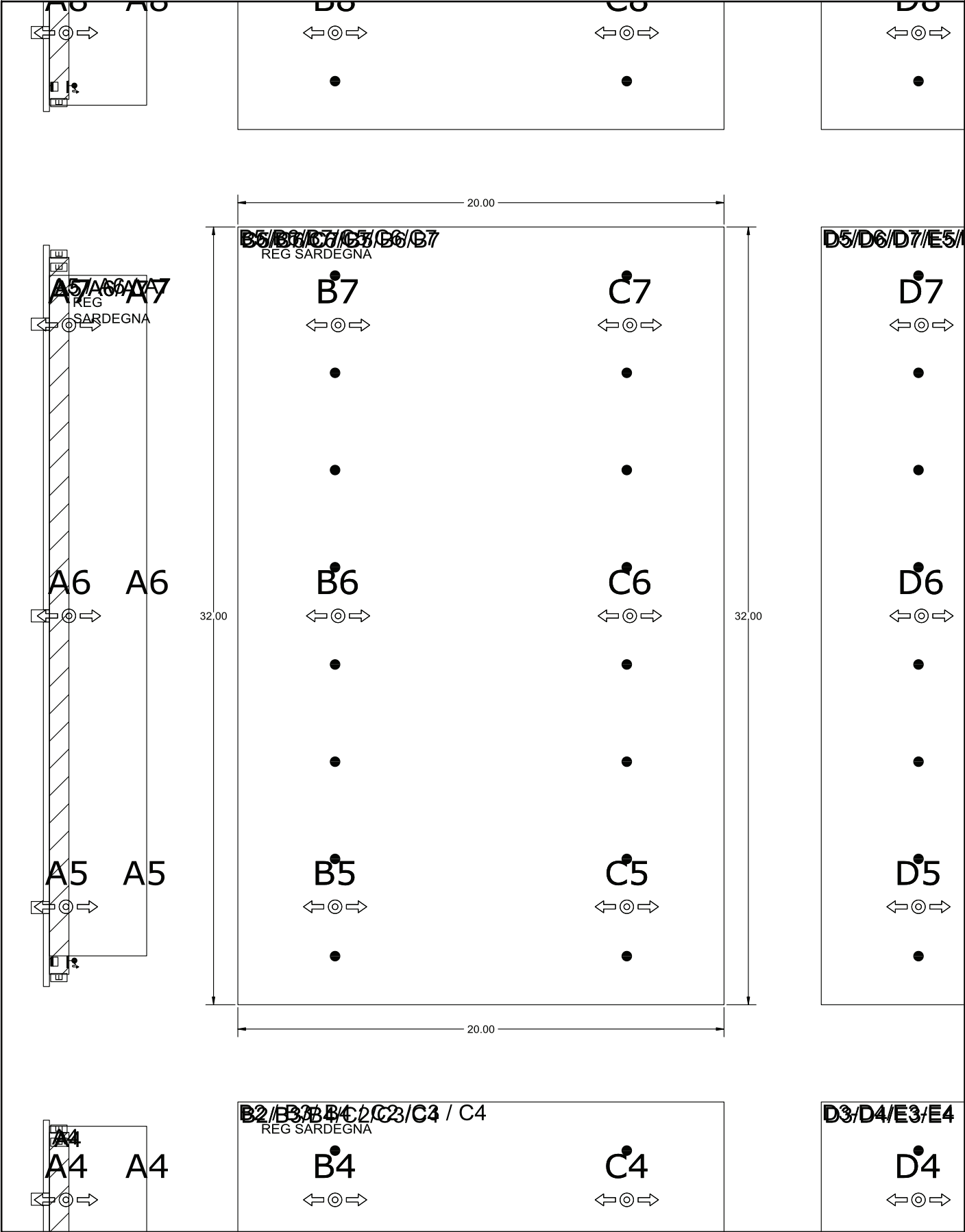
REG SARDEGNA

Padiglione 8 (EX 7B) B5-6-7 / C5-6-7

PIANTA  
PLAN

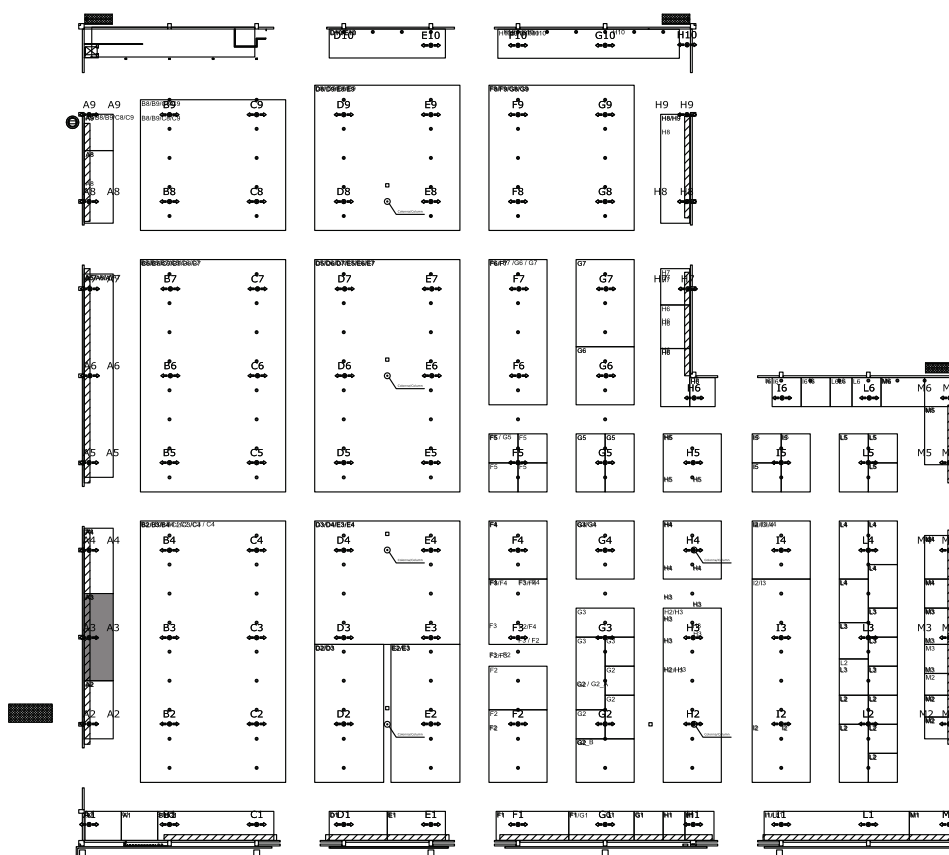
SCALA:  
SCALE: 1:200

DATA:  
DATE: 19/06/2013 12:16

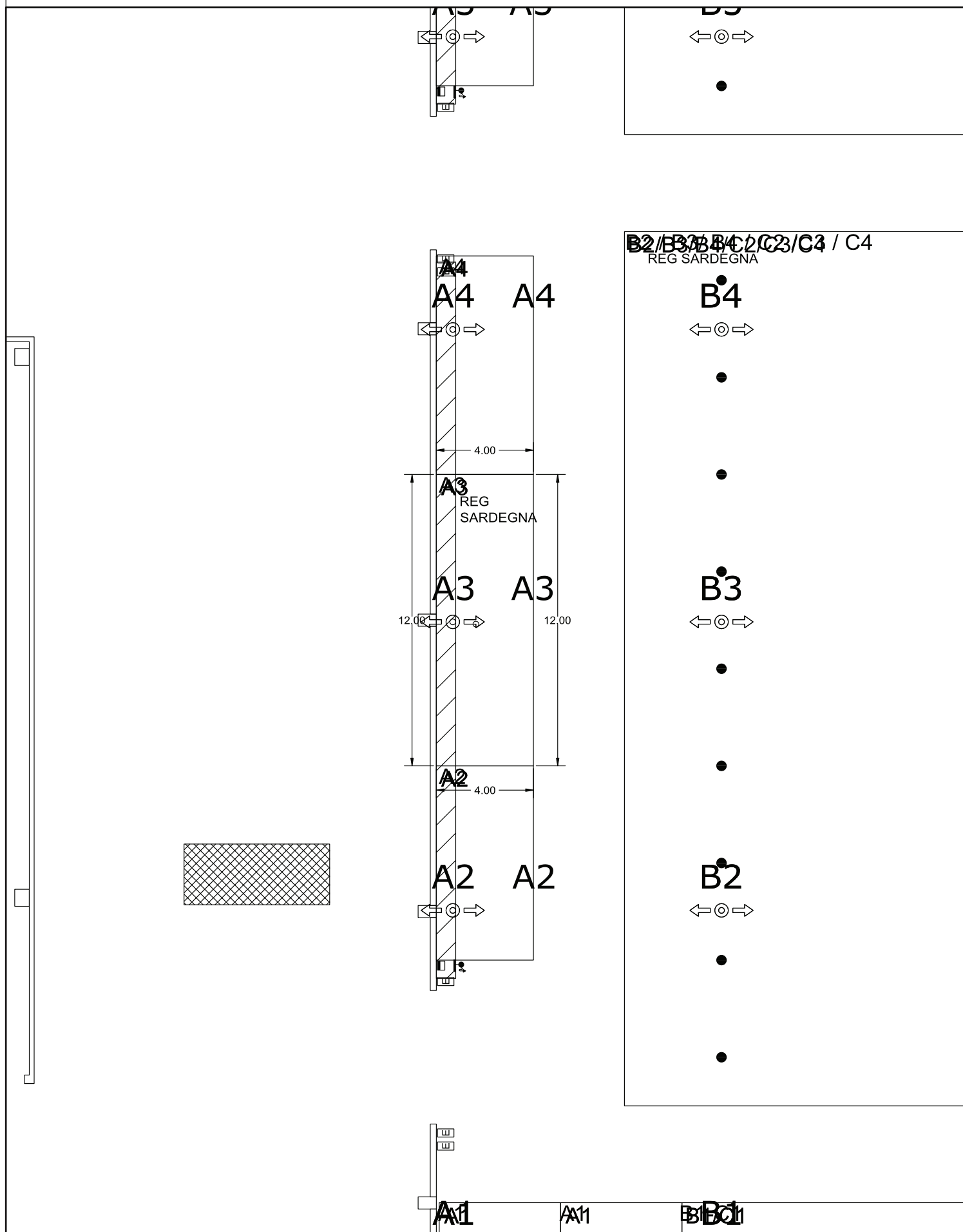


UBICAZIONE DELLO STAND ALL'INTERNO DEL PADIGLIONE  
STAND LOCATION WITHIN THE HALL

DATA: 19/06/2013 12:16  
DATE:

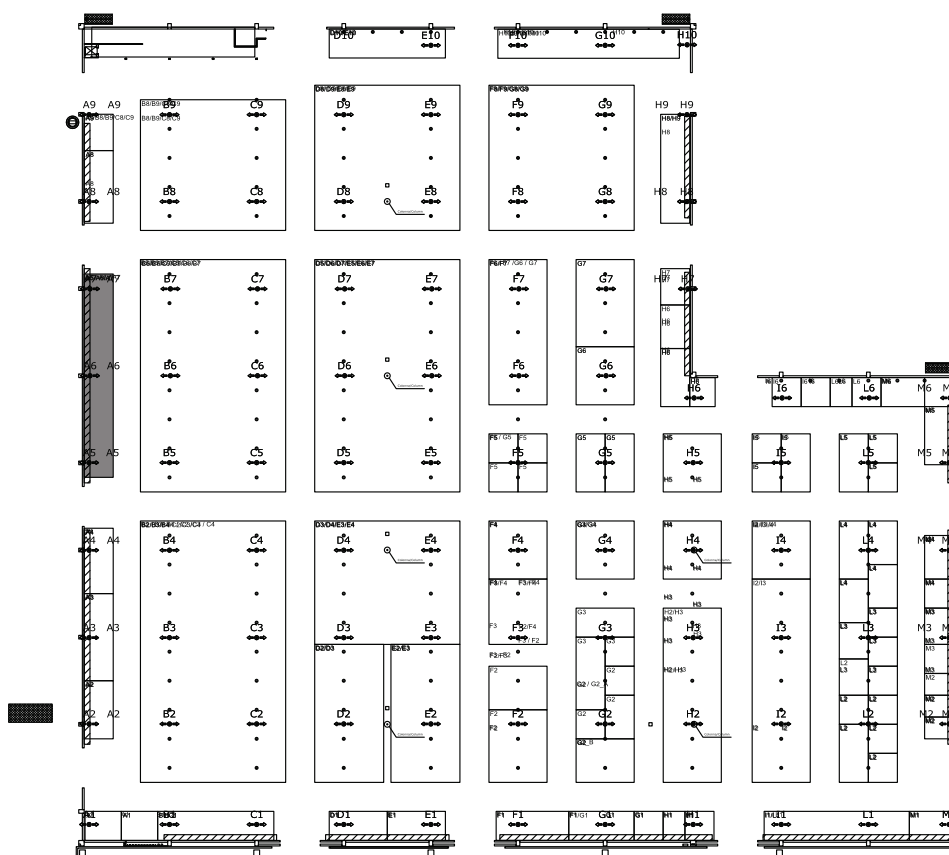


DATA: 19/06/2013 12:16



UBICAZIONE DELLO STAND ALL'INTERNO DEL PADIGLIONE  
STAND LOCATION WITHIN THE HALL

DATA: 19/06/2013 12:16  
DATE:

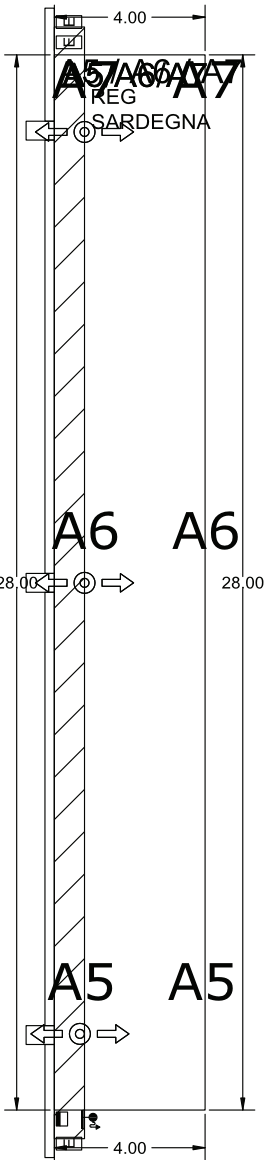
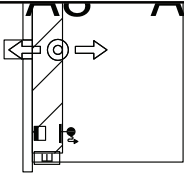




PIANTA  
PLAN

SCALA:  
SCALE: 1:200

DATA:  
DATE: 19/06/2013 12:16



B5/B6/B7/C5/C6/B7  
REG SARDEGNA

B7



B6



B5



B2/B3/B4/C2/C3 / C4  
REG SARDEGNA

A4

A4



B4

