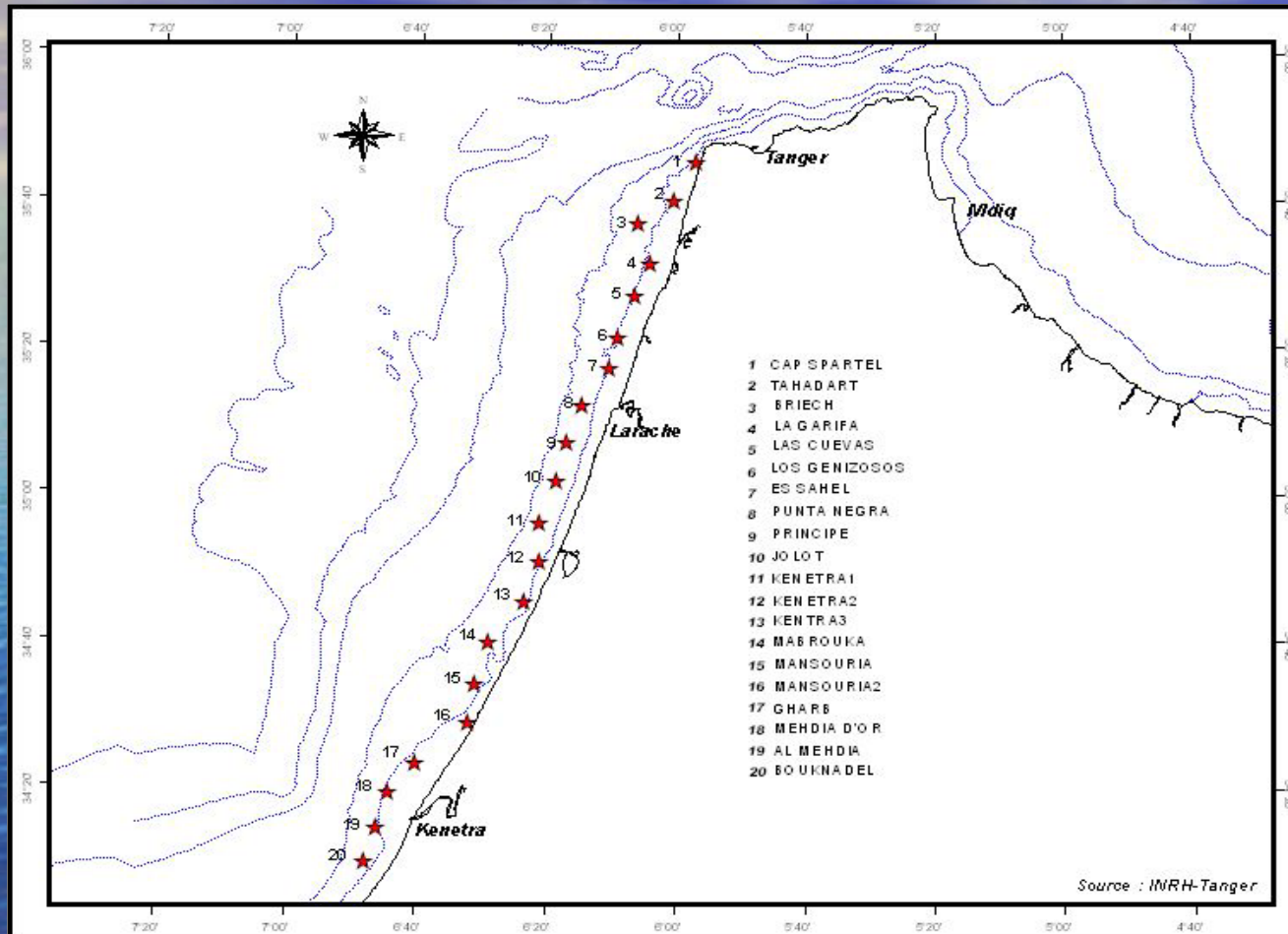


A large bluefin tuna is being hoisted vertically on the deck of a fishing vessel. The fish is suspended by a hook and rope, with its head pointing upwards. Several crew members are visible around the fish, some looking at it and others working with the netting. The background shows the ship's structure and rigging.

**THE MOROCCAN TRAP FISHERY TARGETING
BLUEFIN TUNA (*Thunnus thynnus*)
PERIOD 1986-2009**

*M'Hamed IDRISSE, Fisheries bio-economist
Institut National de Recherche Halieutique –INRH-
Regional Center of Tanger - Morocco*

LOCATION OF THE MOROCCAN TRAPS IN 2009

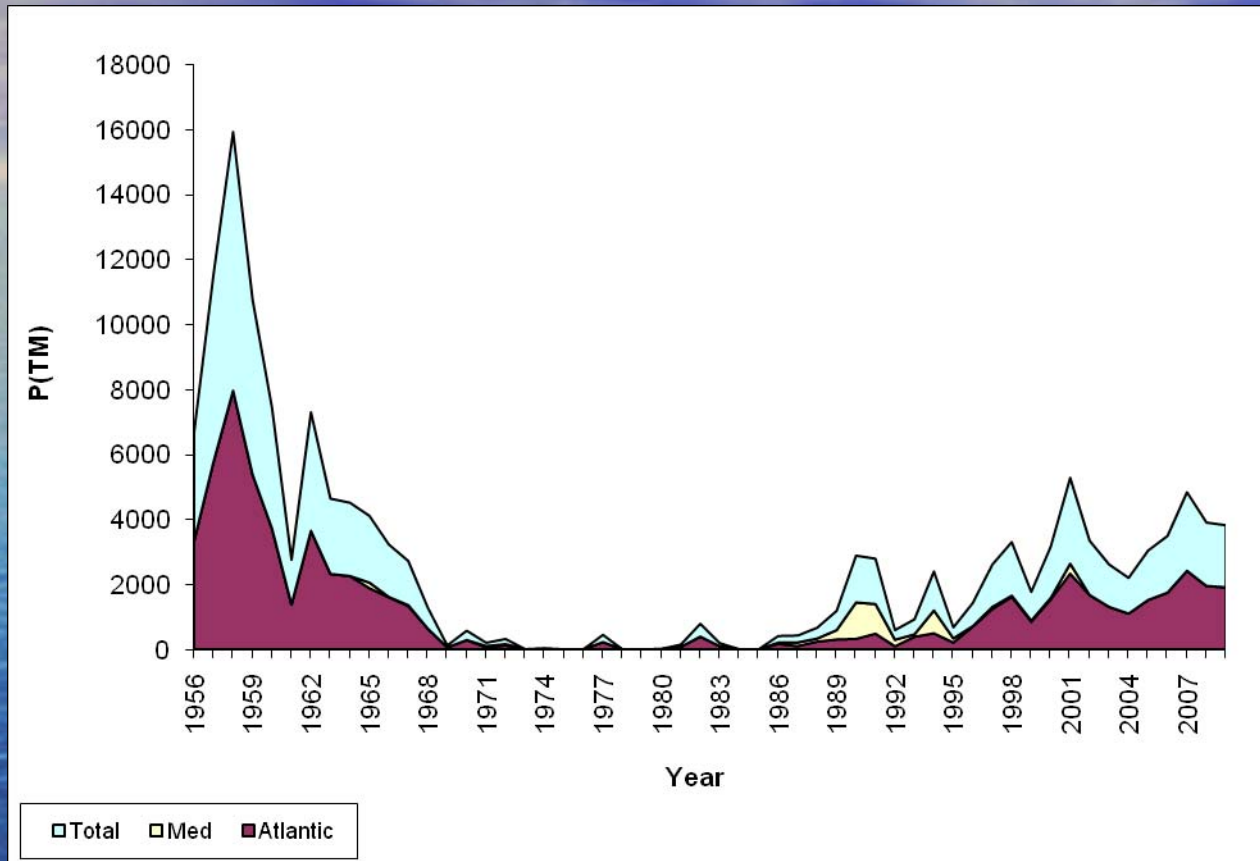


In 2009, traps N° 16, 18 and 19 were not active

MAIN CHARACTERISTICS

- The tuna trap fishery started in the 1930s;
- In 2009, 17 traps set along the north Atlantic coast, close to the Strait of Gibraltar;
- Fishing period: generally from mid-April to mid-June;
- Traps represent on average 60% of the total BFT catches at the national level;
- Catches of the Moroccan traps (1500-1700 T): 5% of the total BFT catches in the Eastern Atlantic and Mediterranean;
- The maximum of BFT catches occurs in May of each year

MOROCCAN BFT CATCHES. PERIOD 1956-2009



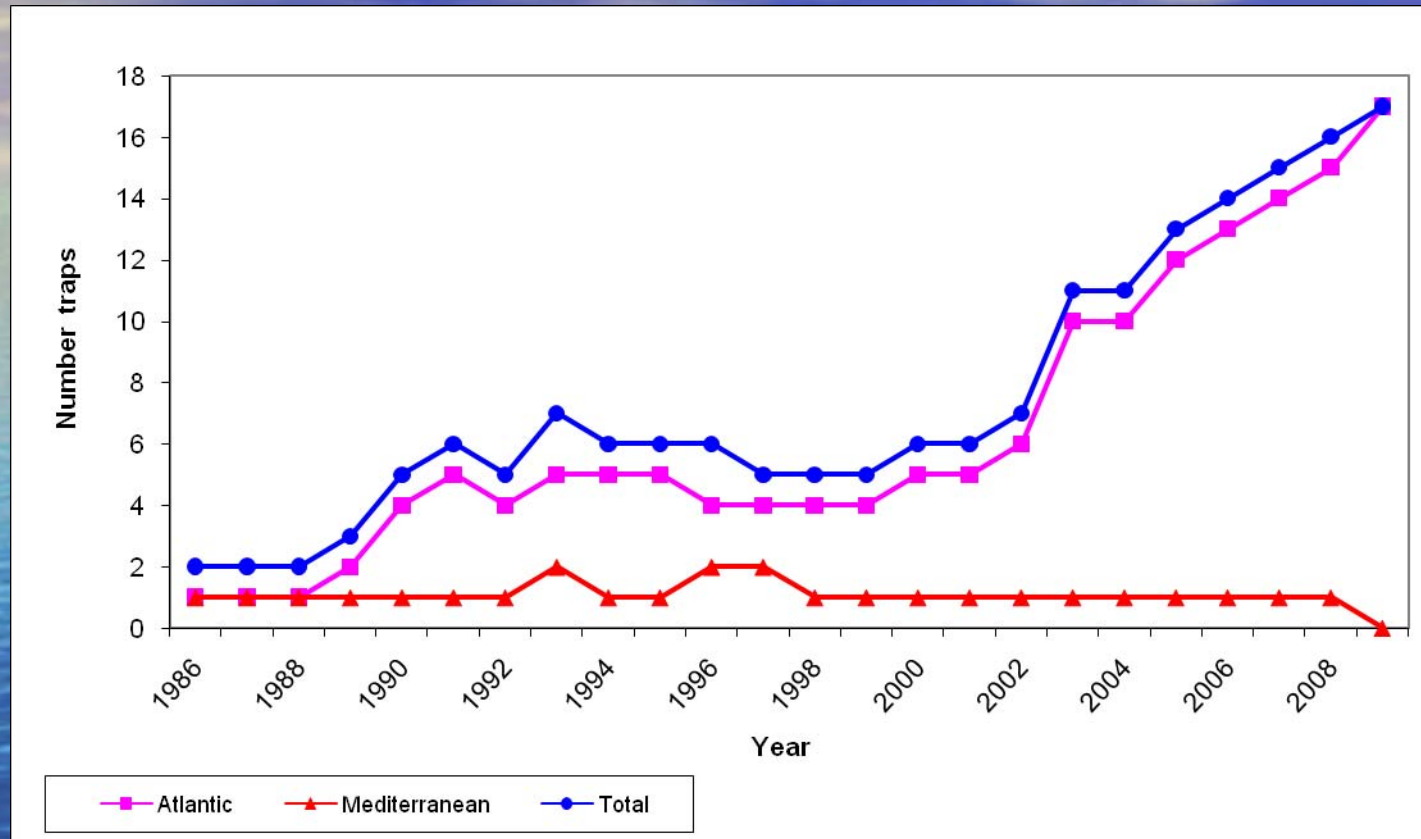
0 BFT catches by the one trap set in Mediterranean since 2002 ????????

PRODUCTION BY AREA & GEAR – LAST 12 YEARS



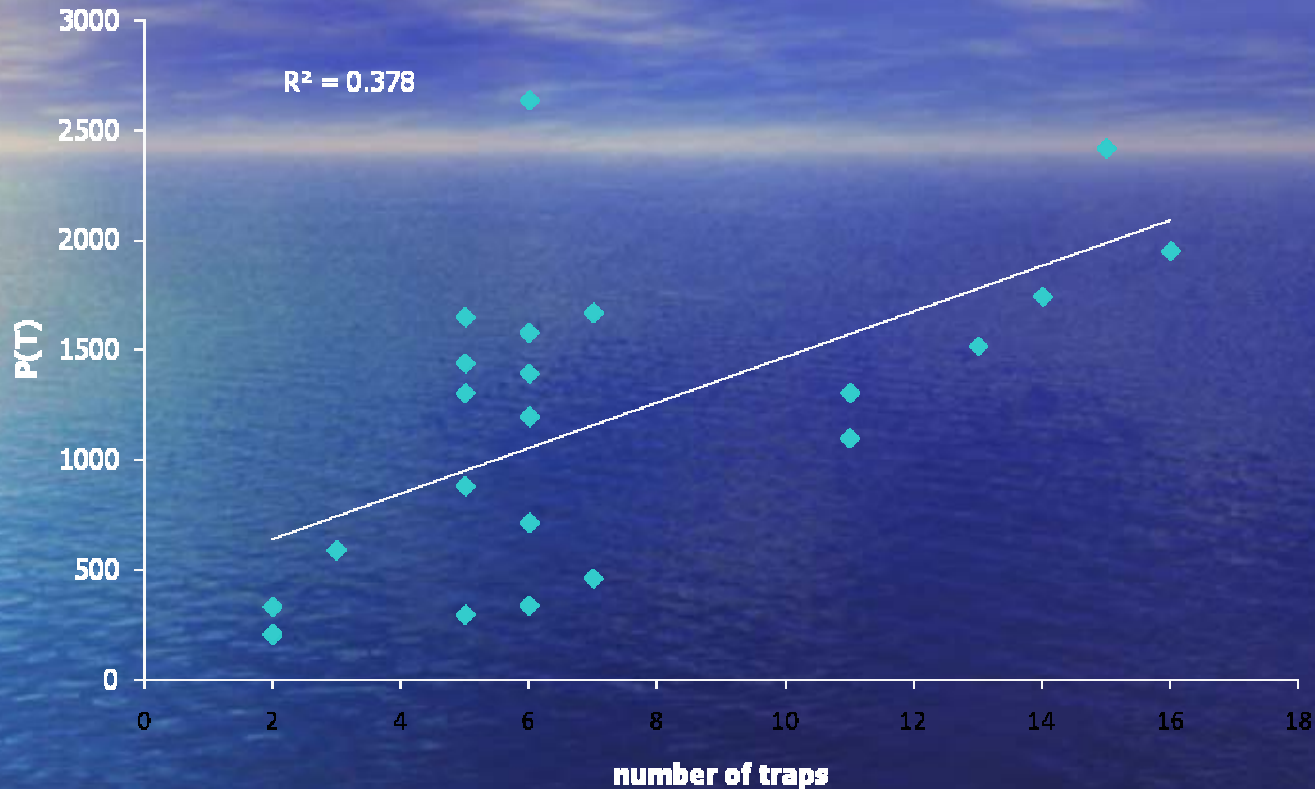
	ENGIN	1998	1999	2000	2001	2002	2003	2004	2005	2006	2007	2008
ATL	TRAP	1615	852	1540	2330	1670	1305	1098	1518	1744	2417	1947
ATL	PS	692	709	660	150	884	490	855	871	179	0	0
ATL	LL	0	0	0	0	0	2	8	16	273	1	0
ATL	GIL	34	30	28	17	11	0	0	0	0	0	0
TOTAL ATL		2341	1591	2228	2497	2565	1797	1961	2405	2196	2418	1947
MED	HAND	634	600	650	195	407	570	597	80	187	19	0.028
MED	GILL	18	6	6	91	14	20	0	0	0	0	0
MED	PS	0	0	0	0	0	170	222	12	3	515	528
MED	LL	0	0	0	0	0	0	0	0	0	107	2
MED	TRAP	35	30	39	307	0	0	0	0	0	0	0
TOTAL MED		687	636	695	511	421	760	819	92	190	641	530
TOTAL GENERAL		3028	2227	2923	3008	2986	2557	2780	2497	2386	3059	2478

NUMBER OF ACTIVE TRAPS FOR THE PERIOD 1986-2009



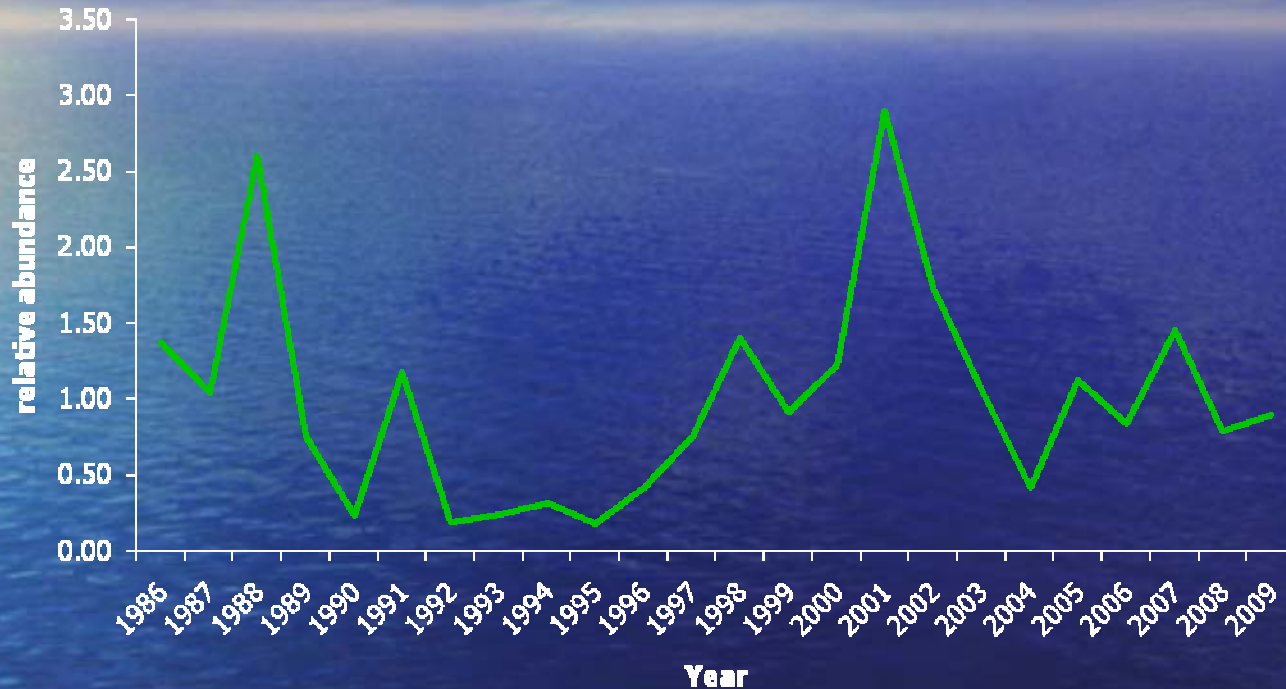
Since 2003 the number of traps has increased

TOTAL BFT CATCHES & NUMBER OF ATLANTIC TRAPS. PERIOD 1986-2009



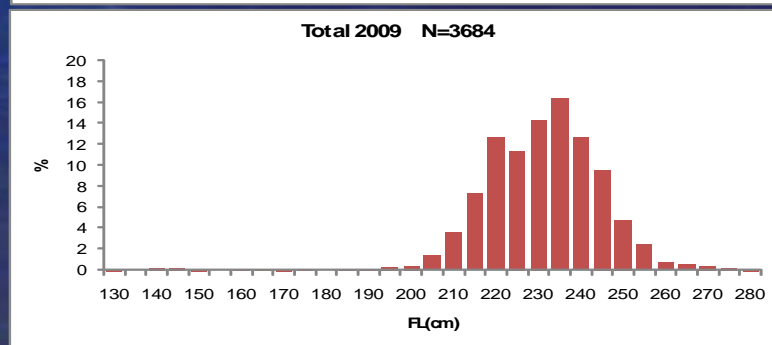
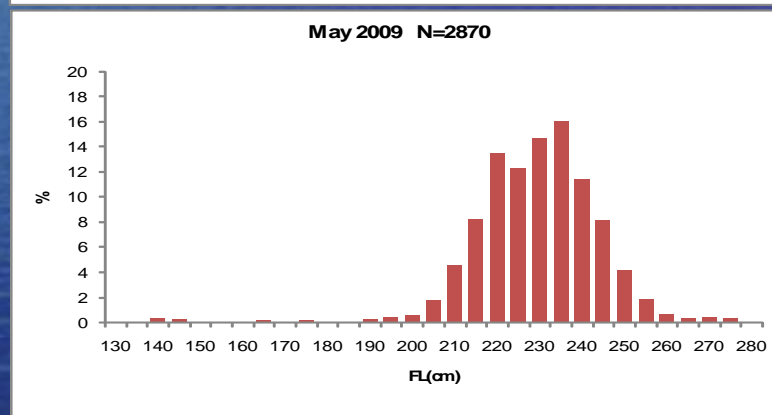
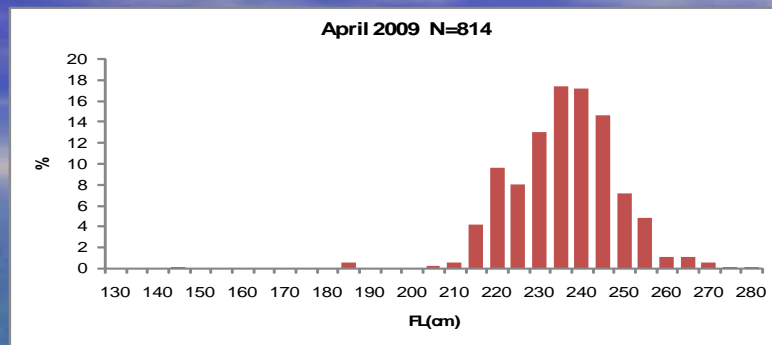
There is no strong linear correlation between the number of traps and the BFT catches; e.g. 5-7 traps can catch as much as 13-14 traps; randomly

RELATIVE STANDARDIZED CPUEs OF BFT. MOROCCAN ATLANTIC TRAPS. PERIOD 1986-2009



The BFT abundance seems to have a cyclic trend, with two peaks in 1988 and 2001

SIZE DISTRIBUTION OF BFT.MOROCCAN ATLANTIC TRAPS. 2009



Average size

April: 238 cm



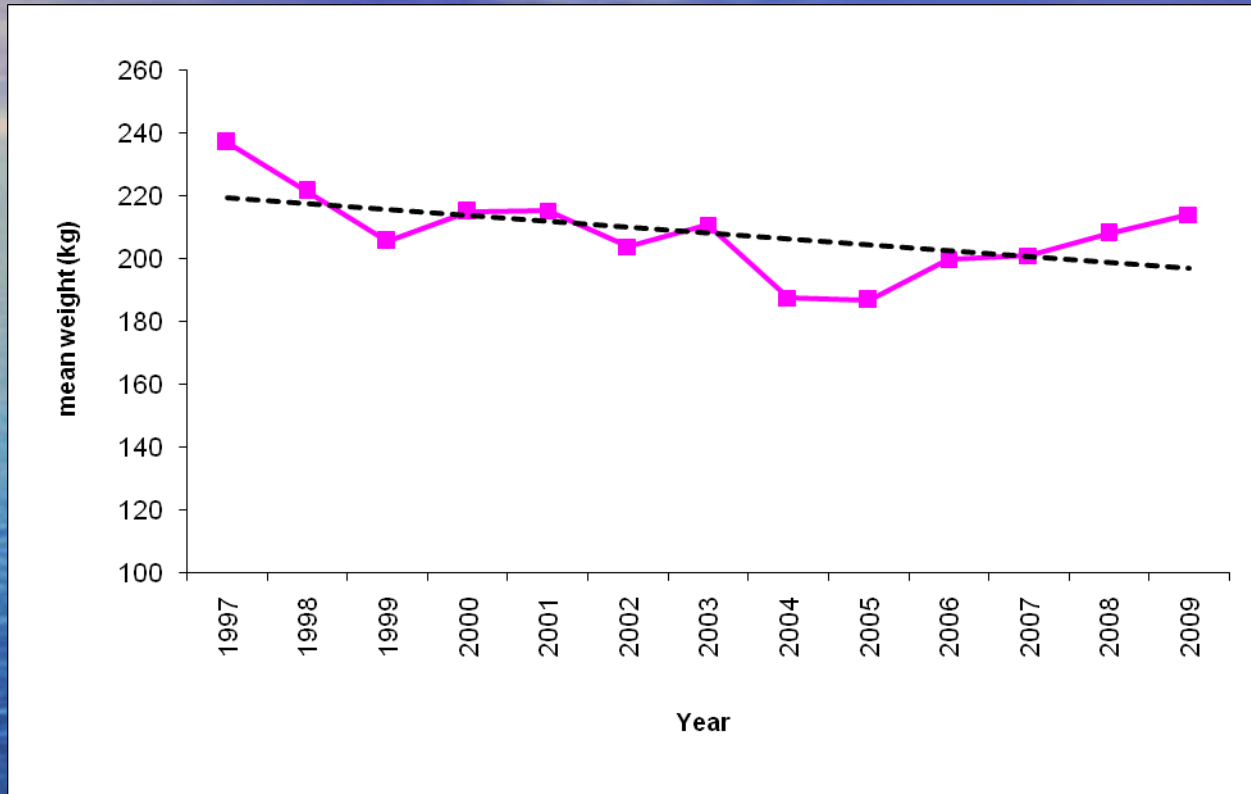
May: 232 cm

Total: 233 cm

The average size decreased according to the month:

The big fishes come into the Mediterranean sea for spawning followed by the smaller ones

TREND IN THE MEAN WEIGHT OF BFT.MOROCCAN ATLANTIC TRAPS. PERIOD 1997-2009



The mean weight has shown generally a decreasing trend over the last decade; however a trend to increase since 2005

LAST DEVELOPEMENT IN THE FISHERY

IN COMPLIANCE WITH THE ICCAT MANAGEMENT MEASURES, THE MOROCCAN FISHERY DEPARTMENT ORDERED IN 2009 THE TRAPS OWNERS TO RELEASE ABOUT 3820 FISH AS THE QUOTA WAS ACHIEVED BY 25TH MAY.

THIS RESPONSIBLE ACTION WILL CONTRIBUTE SIGNIFICATIVELY TO THE RECOVERY OF THE ATLANTIC BFT STOCK BY PROVIDING IT WITH HIGH NUMBER OF RECRUITS

TRAP	NUMBER FISH RELEASED
MANSOURIA	138
KENITRA 3	150
ES SAHEL	600
BOUKNADEL	131
MABROUKA	100
KENITRA 1	120
LA GARIFA	170
LOS CENIZOSOS	1200
PUNTA NEGRA	700
GHARB	59
PRINCIPE	50
BRIECH	400
TOTAL	3818



THANK YOU FOR YOUR ATTENTION